



## SERIES 477AV | HANDHELD DIGITAL MANOMETER



### BENEFITS/FEATURES

- Calculates and displays air velocity and volumetric air flow
- Rugged aluminum case protects instrument from damage during transport/use
- 9 selectable English and metric engineering units
- Large, easy to read display with backlight for use in dark areas
- Stores up to 40 readings with minimum, maximum, and average statistics
- Convenient all-in-one air velocity kit option available

### APPLICATIONS

- Air flow monitoring, when used with a Dwyer® pitot tube
- Duct static pressure
- Commercial air balancing
- Building-zone pressure

### DESCRIPTION

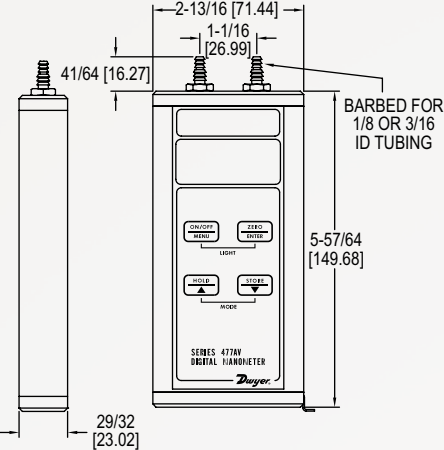
The **Series 477AV Handheld Digital Manometer** is now available with pressure, flow, and velocity measurements along with a number of other convenient features. The built-in air velocity and flow calculations provide accuracy and conserve time and error associated with manual calculations. Also featured on this unit are adjustable zero and span values for calibrating in the field as well as a damping feature to compensate for the fluctuating of readings.

Air velocity kits include: Series 477AV handheld digital manometer, Model 166T 36" telescoping pitot tube, (2) A-303 static pressure tips, (2) 4-1/2' lengths 3/16" ID rubber tubing, A-397 step drill for 3/16" to 1/2" holes, A-532 AV slide chart, and fitted polyethylene case.

### SPECIFICATIONS

|                                       |   |
|---------------------------------------|---|
| <b>Service</b>                        | Air and compatible gases.   |
| <b>Wetted Materials</b>               | Consult factory.  |
| <b>Accuracy</b>                       | ±0.5% FS from 60 to 78°F (15.6 to 25.6°C); ±1.5% FS from 32 to 60°F and 78 to 104°F (0 to 15.6°C and 25.6 to 40°C).   |
| <b>Pressure Hysteresis</b>            | ±0.1% FS.   |
| <b>Pressure Limits</b>                | See chart on page 2.  |
| <b>Temperature Limits</b>             | 0 to 140°F (-17.8 to 60°C).   |
| <b>Compensated Temperature Limits</b> | 32 to 104°F (0 to 40°C).  |
| <b>Storage Temperature Limits</b>     | -4 to 176°F (-20 to 80°C).  |
| <b>Display</b>                        | 0.42" (10.6 mm) 4 digit LCD.  |
| <b>Resolution</b>                     | See chart on page 2.  |
| <b>Units of Pressure</b>              | in w.c., ft w.c., in Hg, psi, oz/in <sup>2</sup> , mm w.c., cm w.c., mm Hg, mbar, Pa, kPa, hPa.   |
| <b>Units of Velocity</b>              | fpm, fps, mph, m/h, m/s, k/h, knot.   |
| <b>Units of Flow</b>                  | cfm, m <sup>3</sup> /h, m <sup>3</sup> /s.  |
| <b>Power Requirements</b>             | 9 V alkaline battery, installed non-functional, user replaceable.   |
| <b>Weight</b>                         | 10.2 oz (289 g).  |
| <b>Process Connections</b>            | Two barbed connections for use with 1/8" (3.18 mm) or 3/16" (4.76 mm) ID tubing; Two compression fittings for use with 1/8" (3.18 mm) ID x 1/4" (6.35 mm) OD tubing for 477AV-7, -8 only. |
| <b>Agency Approvals</b>               | CE.   |

DIMENSIONS



MAXIMUM PRESSURE / RESOLUTION

| Pressure Range   | Max Pressure | Resolution |
|------------------|--------------|------------|
| 0 to 1 in w.c.   | 5 psig       | 0.001      |
| 0 to 4 in w.c.   | 5 psig       | 0.001      |
| 0 to 10 in w.c.  | 5 psig       | 0.01       |
| 0 to 20 in w.c.  | 10 psig      | 0.01       |
| 0 to 40 in w.c.  | 10 psig      | 0.01       |
| 0 to 200 in w.c. | 30 psig      | 0.1        |
| 0 to 10 psi      | 30 psig      | 0.01       |
| 0 to 20 psi      | 60 psig      | 0.01       |
| 0 to 30 psi      | 60 psig      | 0.01       |
| 0 to 100 psi     | 150 psig     | 0.1        |
| 0 to 150 psi     | 200 psig     | 0.1        |

HOW TO ORDER

Use the **bold** characters from the chart below to construct a product code.

**MANOMETER**

**477AV**   **-4**   **-NIST**

**SERIES** \_\_\_\_\_

**477AV:** Handheld digital manometer

**RANGE** \_\_\_\_\_

**-000:** 1 in w.c. (0.25 kPa)      **-4:** 10 psi (70 kPa)  
**-00:** 4 in w.c. (1 kPa)          **-5:** 20 psi (140 kPa)  
**-0:** 10 in w.c. (2.5 kPa)        **-6:** 30 psi (200 kPa)  
**-1:** 20 in w.c. (5 kPa)          **-7:** 100 psi (700 kPa)  
**-2:** 40 in w.c. (10 kPa)        **-8:** 150 psi (1000 kPa)  
**-3:** 200 in w.c. (50 kPa)

**OPTIONS** \_\_\_\_\_

**-COC:** Certificate of calibration  
**-FC:** Factory calibration  
**-NIST:** NIST traceable calibration certificate

**AIR VELOCITY KIT**

**477**   **-0T**   **-AV**

**SERIES** \_\_\_\_\_

**477:** Handheld digital manometer

**RANGE** \_\_\_\_\_

**-000T:** 1 in w.c. (0.25 kPa)  
**-00T:** 4 in w.c. (1 kPa)  
**-0T:** 10 in w.c. (2.5 kPa)  
**-1T:** 20 in w.c. (5 kPa)

**OPTIONS** \_\_\_\_\_

**-AV:** Air velocity kit

ACCESSORIES

| Model             | Description  |
|-------------------|--|
| <b>A-47X-BOOT</b> | Protective magnetic rubber boot  |
| <b>A-402A</b>     | Carrying case; tough gray nylon pouch protects any Series 477AV Manometer; double zippered for quick and easy access, with a belt loop that snaps closed; 7-1/2"H x 3"W x 2-1/4"D (191 x 76 x 57 mm) |