

2000P Series

Easy to operate, reliable and robust the 2000P Series Pressure instruments surpass the performance and cost demands of today's **industrial & HVAC markets**. Combining innovative functions with high accuracy and speed of response they are designed to make the operator's job simple and efficient.

The 2000P Series offers twin input for differential or gauge measurement with pressure ranges from 25mbar to 10bar. All instruments are dust and waterproof as standard (IP67) and optional coloured rubber boots are available adding protection and style to these multifunctional pressure instruments.

General Specification

Operating Temperature:	0°C to +50°C/+14°F to +122°F (ambient)
Battery Type:	Two AA or equivalent cells (not supplied)
Battery Life:	Typically 200 hours
Low Battery Check:	Symbol appears on display
Display:	12.7mm / 0.5" custom L.C.D.
Over range/Under range:	'Out' displayed
Environmental Specifications:	IP67 as standard with hose connected
Auto Switch-Off Time:	12 minutes
Port Size:	4 mm, 1/8 BSP
Dimensions:	155 x 67 x 40mm/6.1 x 2.6 x 1.6"
Weight:	180g/6.4oz
2000P Series Instrument Accuracies (except 2020P7):	+20 to +50°C: 0.10% of RDG +0.10% of F.S + 1 LSD -10 to +20°C: 0.15% of RDG +0.15% of F.S + 1 LSD
2020P7 Accuracy:	+20 to +50°C: 0.15% of RDG +0.15% of F.S + 1 LSD -10 to +20°C: 0.5% of RDG +0.5% of F.S + 1 LSD



2020P Model

For other options, please contact us digitronsales@rototherm.co.uk or +44 (0)1656 740551

Key Features and Benefits

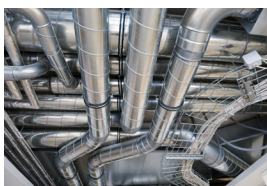
- Pressure ranges from 25mbar to 10bar
- Positive and negative (vacuum) pressure measurement
- Auto ranging displays – for precise readings
- Selectable auto switch-off – saves on operation cost and battery life
- IP67 BSI Cert 229/000132 – Dust and waterproof for added protection
- Selectable pressure units: psi, mbar, inH₂O, mmH₂O, mmHg, inHg, Pa

Optional Extras

- Protective Rubber Boot
- 6mm OD/4mm ID Nylon Tubing
- 'T' Piece
- Carry Case
- Calibration Certificate

Main Applications

A **world leader** in digital pressure instruments, Rototherm has become the standard for accurate and reliable measurement across the following industries:



Industrial & Domestic
HVAC



Laboratories & Clean
Rooms



Service, Maintenance
& Calibration

Model Specification

Model Options	2020P	2021P	2022P	2023P	2025P	2026P	2028P
Operating Range	25mbar	130mbar	2bar	7bar	2bar absolute	0 to 10bar	1bar
Over range	350mbar	750mbar	4bar	10bar	4bar absolute	17bar	2bar
Backlight	•	•	•	•	•	•	•
Out of range	•	•	•	•	•	•	•
Zeroing	•	•	•	•		•	•
Hold	•	•	•	•	•	•	•
Smoothing	•	•	•	•	•	•	•
Units of Pressure	•	•	•	•	•	•	•
Range Lock	•	•	•	•	•	•	•
Max/Min	•	•	•	•	•	•	•
Zeroing Absolute					•		

Pressure Scales

	2020P7	2021P7	2022P7	2023P7
mbar	0 to 1999 μ bar +0.00 to 25.00 mbar	0.00 to 19.99 mbar + 0.0 to 130.0 mbar	0.0 to 199.9 mbar + 0 to 1999 mbar	0 to 1999 mbar + 0.00 to 7.00 bar
Pa	0.0 to 199.9 Pa + 0 Pa to 2500 Pa	0.00 to 13.00 kPa	0.00 to 19.99 kPa + 0.0 to 199.9 kPa	0.0 to 199.9 kPa + 0 to 700 kPa
In H ₂ O	0.00 to 10.05"	0.00 to 52.28"	0.0 to 199.9" + 0 to 804"	0.0 to 199.9" + 0 to 2815"
m H ₂ O	0.00 to 19.99 mm + 0.0 to 255.3 mm	0.0 to 199.9 mm + 0 to 1320 mm	0.00 to 20.43 m	0.00 to 19.99 m + 0.0 to 71.5 m
In Hg	0.00 to 0.73"	0.00 to 3.83"	0.00 to 59.00"	0.00 to 19.99" + 0.0 to 206.7"
m Hg	0.00 to 18.75 mm	0.00 to 19.99 mm + 0.0 to 97.5 mm	0.00 to 19.99 cm + 0.0 to 150.0 cm	0.00 to 5.25 m
PSI	0.00 to 0.36 psi	0.00 to 1.88 psi	0.00 to 29.00 psi	0.00 to 19.99 psi + 0.0 to 101.5 psi
	2025P7 Absolute	2026P7	2028P7	
mbar	0.0 to 199.9 mbar + 0 to 1999 mbar	0 to 1999 mbar + 0.00 to 10.00 bar	0.0 to 199.9mbar + 0 to 1000mbar	
Pa	0.00 to 19.99 kPa + 0.0 to 199.9 kPa	0.0 to 199.9 kPa + 0 to 1000 kPa	0.00 to 19.99kPa + 0.0 to 100.0kPa	
In H ₂ O	0.0 to 199.9" + 0 to 804"	0.0 to 199.9" + 0 to 4022"	0.0 to 199.9" + 0 to 402"	
m H ₂ O	0.00 to 20.43 m	0.00 to 19.99 m + 0.0 to 102.2 m	0.00 to 10.22m	
In Hg	0.00 to 59.00"	0.00 to 19.99" + 0.0 to 295.3"	0.00 to 29.5"	
m Hg	0.00 to 19.99 cm + 0.0 to 150.0 cm	0.00 to 7.50m	0.00 to 19.99cm + 0.0 to 75.0cm	
PSI	0.00 to 29.00 psi	0.00 to 19.99 psi + 0.0 to 145.0 psi	0.00 to 14.50psi	

Technical Certification

- Certificate of Conformity
- Factory Test Certificate
- Factory Calibration Certificate

Export Documentation

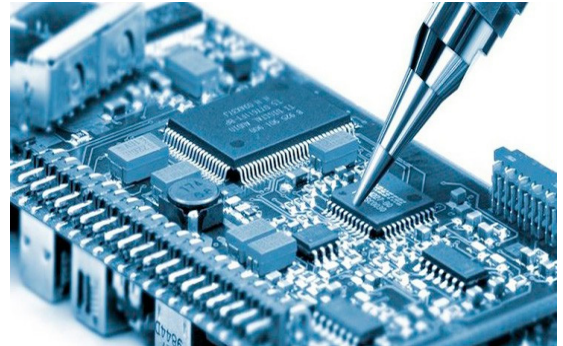
- Certificate of Origin
- EUR1
- ATR

Calibration and After-Sales Support

- Fully trained field service personnel
- Use of UKAS certified calibration equipment
- 5 day turnaround
- Fixed pricing
- Approved manufacturer parts
- Full post-service reports
- 12 month warranty



ISO9001:2015
FM11958



For more information, please contact our service team
digitronservice@rototherm.co.uk

SALCAS
www.SALCAS.com.br

SALCAS Indústria e Comércio

R. Marilândia, 265 | São Paulo-SP | 02802-070

Tel: (11) 3977.7838 | Fax: (11) 3998.7535

E-mail: contato@salcas.com.br